

EVE™ HTA26

Fully Automated Cell Counting System



EVE™ HT A26

Fully Automated Cell Counting System

EVE™ HT A26 is a fully automated cell counting system engineered to streamline sample preparation and analysis. By integrating hands-free pipetting, aliquoting, diluting, staining, and counting into a single system, it delivers high-throughput performance while reducing workflow variability and ensuring reproducible results.

Hands-Free Processing

Fully automated workflow from sample preparation to cell counting

96 Samples in 10 Minutes

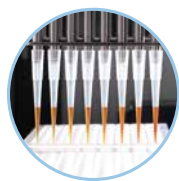
Providing high-throughput capability with precise and reliable results

20 µL Sample Volume

Delivers accurate analysis with small sample volume

EVE™ HT A26 Hardware Features

After the user loads the consumables and samples on the deck, EVE™ HT A26 automatically performs the entire cell counting workflow—including aliquoting, diluting, mixing, loading, and counting.



8-channel pipette head

Automated 8-channel pipette head precisely handles reagents and cell samples with disposable tips for reliable performance.

Reservoir holder

Designed to securely hold reagent reservoirs for staining and assay preparation.

Counting plate holder

Accommodates up to two counting plates (48 channels each) for high-throughput, accurate analysis.



Lift-up door

Auto-darkening interlocked lift-up door ensures user safety during operation and prevents external light interference during counting samples.

Pipette tip holder

Compatible with 200 µL pipette tips for seamless automated liquid handling.

Well plate holder

Holds both a 96-well sample plate and a mixing plate simultaneously to streamline workflow efficiency.



Error Rate Reduction

Automated operation minimizes human error and reduces hands-on time

Auto Aliquoting & Dilution

Integrated aliquot and dilution process enhancing user convenience

Dual Fluorescence & Brightfield Channels

AO/DAPI, Trypan Blue and Erythrosin B staining compatible

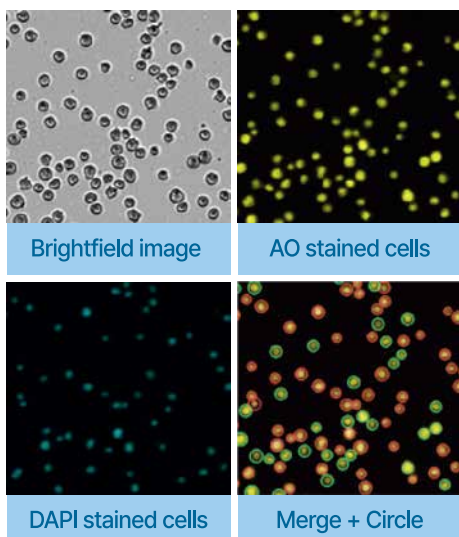
Delivers Consistent Results Across Users

Ensures reproducible performance independent of user variability

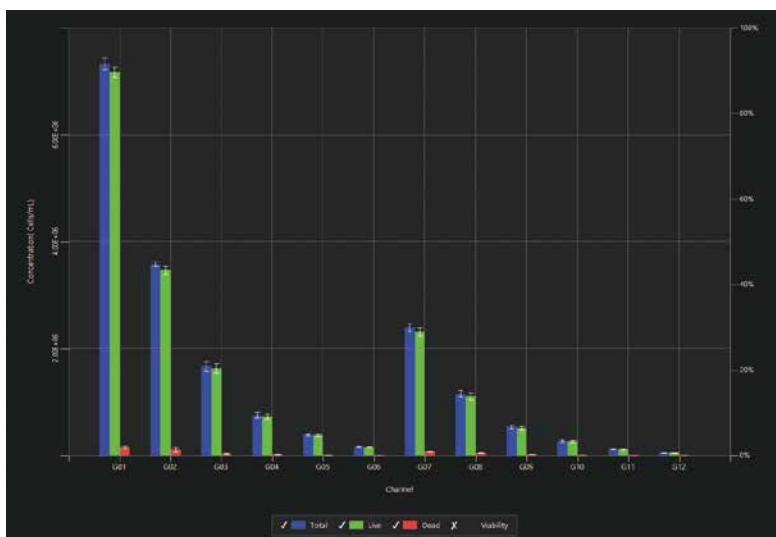
Streamline Your Workflow

Complete Automation, Confident Outcomes

Fully Automated Sample Dilution & Staining Together with the Benefits of Fluorescence-based Cell Counting

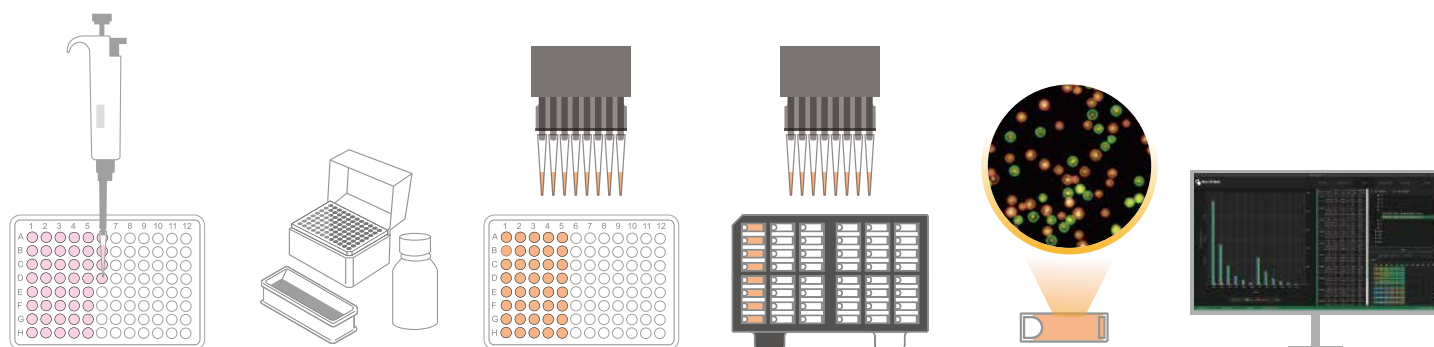


Fluorescence-based method distinguishes debris and counts only nucleated cells.



Two samples were diluted by EVE™ HT A26. Cell counts decreased by approximately half at each step, confirming consistent 2-fold dilution.

EVE™ HT A26 significantly reduces hands-on time by automating both sample preparation and cell counting. Its fully integrated workflow minimizes manual steps, improves overall efficiency, and accelerates processing speed—enabling the system to count up to 96 samples in just 10 minutes.



Sample Plating

Deck Setup

Sample Staining

Sample Loading

Cell Counting

Results Review

Ordering Information

Cat. No	Product	Contents
EVE-HT A26	Fully Automated Cell Counting System	Main device, Desktop PC, Monitor
EVA26-020	EVE HT A26 Counting Kit	960 tests / kit Counting plate (48 channels × 20 plates) Sample & mixing well plate (96 wells × 20 plates) Reservoir (5 pcs × 4 packs)
EVA26-020S	EVE HT A26 Starter Kit	Counting kit (1 kit) Disposable pipette tips (5 trays × 3 packs) AO/DAPI staining solution (20 mL × 2 bottles)
EVAD-960	AO/DAPI Staining Solution	20 mL × 2 bottles
EVAD-961	AO/DAPI Staining Solution	50 mL × 2 bottles

Cat. No	Product	Contents
EVTB-960	Trypan Blue Stain, 0.4%	20 mL × 2 bottles
EVTB-961	Trypan Blue Stain, 0.4%	50 mL × 2 bottles
EVEB-960	Erythrosin B Stain, 0.05%	20 mL × 2 bottles
EVEB-961	Erythrosin B Stain, 0.05%	50 mL × 2 bottles
EVPT-960	EVE HT A26 Disposable Pipette Tips	96 tips × 5 trays × 3 packs

Specifications

Analysis time	96 samples in 10 minutes
Sample volume	20 µL per count (Direct mode) ≥ 40 µL per count (Full mode)
Measuring range	Detectable range: 1×10^4 – 2×10^7 cells/mL Optimal range: 1×10^5 – 1×10^7 cells/mL
Cell size range	Detectable size: 1–85 µm Optimal size: 5–80 µm
Channel	Dual fluorescence (AO & DAPI), Brightfield
Staining solution	AO/DAPI mixed solution Trypan Blue stain Erythrosin B stain

Capacity	96 samples per run
Pipette head	8-channel pipette head
Operating system	Windows 11 LTSC
Power	100–240 VAC, 50/60Hz, 400 W
Dimensions	700 × 690 × 856 mm (W×D×H)
Weight	147 kg
21 CFR Part 11 Compliance	Available (Optional)



website www.nanoentek.com
e-mail sales@nanoentek.com

FOR RESEARCH USE ONLY.
Not for use in diagnostic procedures.

NanoEntek, Inc.

Head Office
12F, 5, Digital-ro 26-gil, Guro-gu, Seoul, 08389, Korea
Tel +82-2-6220-7940 / Fax +82-2-6220-7999

NanoEntek America, Inc.
220 Bear Hill Road, Suite 102, Waltham, MA 02451, USA
Tel +1-781-472-2558 / Fax +1-781-790-5649

NanoEntek Europe | mts med-tech supplies GmbH
Lochhamer Str. 4a, 82152 Martinsried, Germany
Tel +49-89-21-55-38-43 / Fax +49-89-99-95-46-60