

Arthur™

Novel fluorescence cell counter

User Manual



Contents

Product Components	4	Analyzing data	31-36
Product Overview	5	• Select data file	31
Description	6-7	• Rename	32
Installing Arthur™	8	• Delete	32
<hr/>			
Operation	9-36	• Review	33
Settings	9-16	• Annotate	33
• Set date & time	9	• Export data	34-35
• Set counting settings	10	• Cell analysis report	36
• Align cameras	11-12	<hr/>	
• Calibrate	13-15	Cleaning & Maintenance	37
• Update firmware	16	Warranty	38
Recommend actions	17	Safety precautions	39-41
Selecting assay	18	Product specifications	42
Naming the sample	19	Ordering information	43
Loading sample	20-21	Technical support	44-45
Focusing	22		
Measuring background (optional)	23		
Running sample	24-28		
Analysis result	29-30		
• Viability	29		
• Apoptosis	29		
• Cell cycling	30		
• Green fluorescence	30		

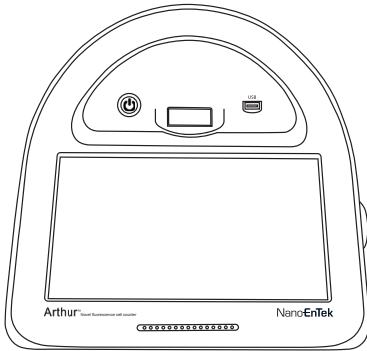
Product components

Arthur™ is shipped with the following components.

Please check all components listed below when an instrument was delivered. If any item is missing or damaged, contact your local distributor or e-mail sales@nanoentek.com.

Novel fluorescence cell counter

1EA



Power cord with 4 adaptor cords (4 pcs/set, for U.S./Canada/ Taiwan/Japan, Europe or UK)

1SET



Cell analysis slide (Cat. No. AC0050)

1Box (50 slides/box)



USB drive

4 GB

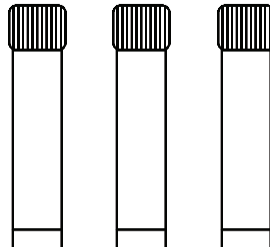
1EA



Calibration beads

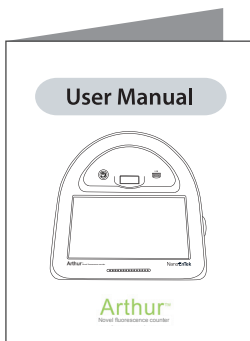
(Green Cali.Beads, Red Cali. Beads and
Alignment Beads)

1 KIT



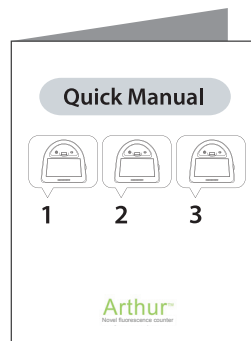
User manual

1EA



Quick manual

1EA



Product overview

The Arthur™, Novel fluorescence cell counter, is a 3-channel (bright field, green fluorescence, red fluorescence) desktop image analyzer that allows users to perform assays for cells in suspension, including GFP and RFP expression, apoptosis, cell viability (live, dead, and total cells), cell cycle, and cell counting assays using state-of-the-art optics. It is compatible with a wide variety of eukaryotic cells.

Depending on complexity of the assay and number of fields captured, it takes 10 seconds to 2 minutes that Arthur™ counts for a typical assay with only 25 µL of sample volume. In addition to the bright field channel, the Arthur™ features two fluorescent channels (green and red), enabling it to simultaneously count green or red fluorescent stains, as well as cells expressing GFP and RFP.

The Arthur™ offers an intuitive user interface, and provides the option to save data and generate a report, which can then be transferred to a PC using the USB drive supplied with the instrument or available separately.

The Arthur™ is supplied with disposable Arthur™ Cell analysis slide, which are also available separately.

Features

- Is designed for compact desktop design for fast, easy-to-use, and accurate 3-channel assay.
- Uses disposable Arthur™ Cell analysis slide that eliminate washing steps and cross contamination between samples.
- Provides comprehensive test results with graphic data and the cell analysis report allowing the export of data as .csv (comma separated value), .jpg, .fcs, and .pdf files for archiving and sample comparisons.

Description

Front View

Power button

The power button is used to turn the instrument on and off. The blue status light indicates that the instrument is on.

LCD touch screen

The LCD touch screen display, located in the front of the instrument, provides buttons for all the functions available and shows data from the cell count.

Slide port

The slide port is used to insert the Arthur™ Cell analysis slide containing the sample into the counter for analysis.

USB port

The USB port allows you to transfer and save the cell count data and image to your computer for record keeping and printing purposes. The USB drive supplied with the instrument or any other standard USB drive is inserted into the USB port for data transfer.

Focus knob

The focus knob is used to adjust the image quality to obtain better contrast between the cells and the background, as well as between cells that have taken up Arthur™ reagents and unstained cells.



Description

Rear and Side view

Power inlet

The power inlet connects the instrument to an electrical outlet through the supplied power cord and the appropriate plug, based on the electrical outlet configuration in your country.

On/Off switch

The on/off switch is the main power switch that is not required to use for day-by-day operation of the Arthur™.



Installation

Installing Arthur™

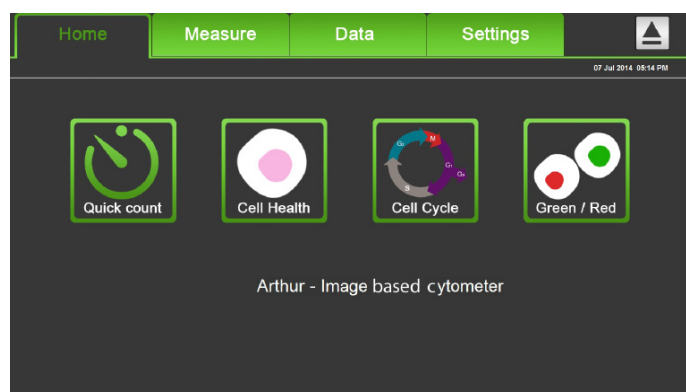
1. After unpacking the instrument, place the instrument on a flat, level, dry surface.
2. Plug one end of the supplied power cord into the Arthur™. To the other end attach the appropriate plug adaptor, based on the electrical outlet configuration in your country.
3. Plug the power cord into the electrical outlet. Be sure to use only the power cord supplied with your instrument. Powering the instrument with an unapproved power cord may damage the instrument.



4. Turn on the main power switch (i.e., On/Off switch) located above the power inlet port (page 7).
5. When you are ready to use, turn on the Arthur™ by pressing the **Power button** on the front of the instrument.



6. When the Arthur™ is turned on, the instrument starts up and displays the Home screen. From the Home screen, you can proceed immediately to Arthur™ Assays functions including **Quick count**, **Cell Health**, **Cell Cycle**, or **Green/Red**, and you can use the navigation bars to access saved data (Data screen) or adjust instrument settings (Settings screen).

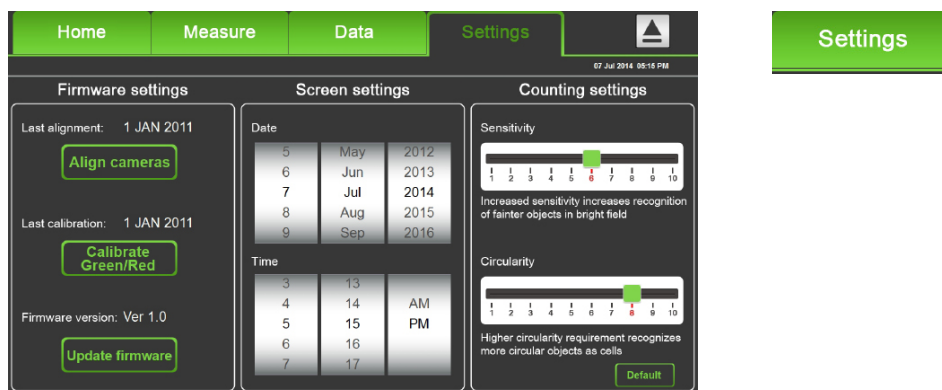


IMPORTANT

When installing or moving Arthur™, it is recommended to perform auto-alignment (page 11).

Settings

1. Press the **Settings menu** on the navigation bar to see the Settings screen.



The Settings screen allows you to:

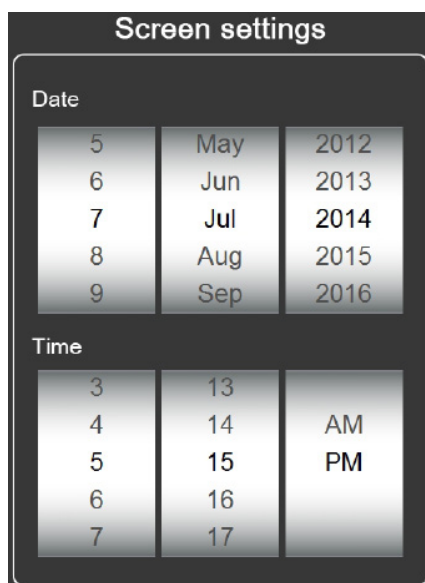
- Calibrate and align the instrument to ensure optimal performance (page 11)
- Update to install new firmware version as it become available (page 16).
- Set up date and time (see below).
- Adjust counting settings (sensitivity and circularity) (page 10).

Settings

Set date & time

1. The date and time is preset. Press the **Settings menu** to reset date and time based on your environment.

2. Choose the date and time by moving up and down the roller wheel. After completing date/time setting, the updated date/time will be displayed on the top right corner of the screen.



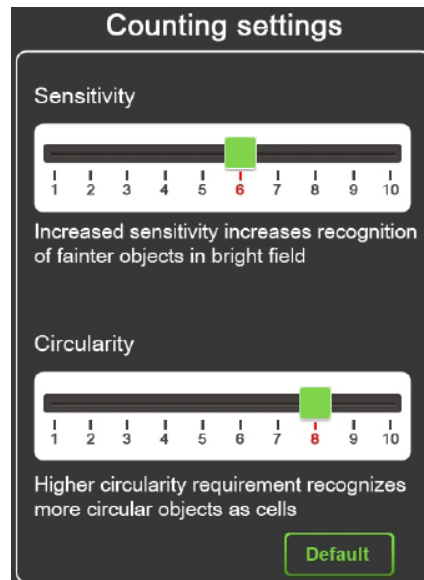
Operation

Settings

Set counting settings

1. Press the **Settings menu** to adjust counting setting. The counting parameter of Arthur™ is preset in order to perform accurate cell counting for the majority of cultured cell types without changing default counting parameter. The global parameters for counting described below:

- **Sensitivity** refers to the contrast of the objects from the background. Increasing the sensitivity makes the instrument more sensitive to objects in the bright field, while decreasing the sensitivity makes the instrument less sensitive, which is useful if there is a significant amount of debris in the sample.
- **Circularity** is used to determine which objects to include in the measurement based on their roundness. Increasing the circularity value requires objects to be rounder for inclusion in the measurement and may be useful if you need to distinguish perfectly round cells from more oddly-shaped cells. Decreasing the circularity allows objects to be less round for inclusion in the measurement and may be useful if the cell type is not particularly circular or perhaps oddly shaped.



2. Change sensitivity and circularity by moving slider. If necessary to return to default values, press the **Default button**.

Default

In addition to sensitivity and circularity, you can also adjust the parameters for the cell size and green and/or red-fluorescence, which are specific to the assay in use (page 26).

Operation

Settings

Align cameras

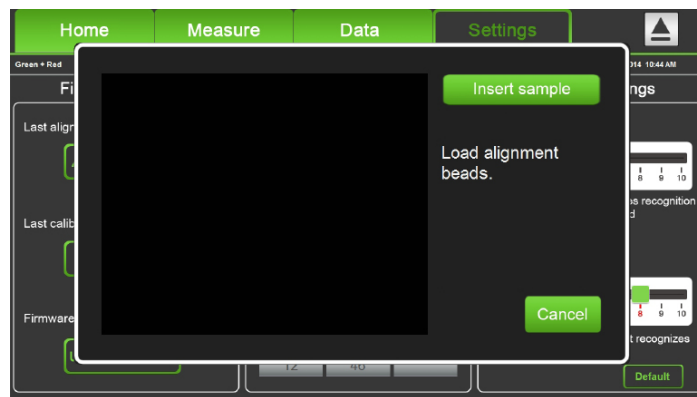
The proper alignment of the two cameras inside the Arthur™ is required to obtain the most accurate data for a recent image with the bright field image.

1. Load 25 µL of Arthur™ Alignment Beads on the Arthur™ Cell analysis slide (page 20).

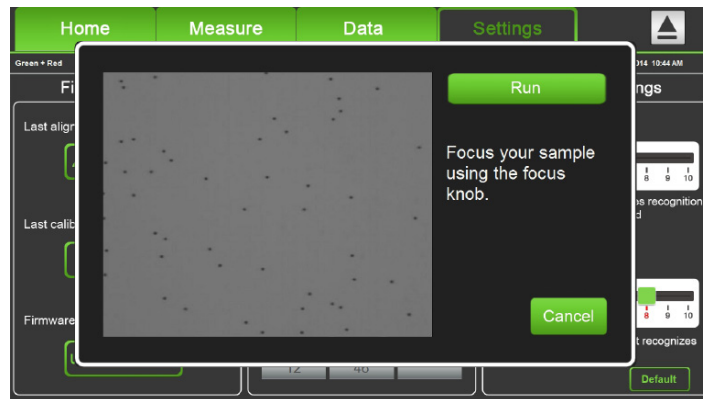
2. Press the **Align cameras** to start the alignment procedure.

Align cameras

3. Insert the Arthur™ cell analysis slide containing the Arthur™ Alignment Beads into the instrument.



4. Adjust the focus using the **Focus knob**.



5. Press the **Run** button to start the auto-alignment.

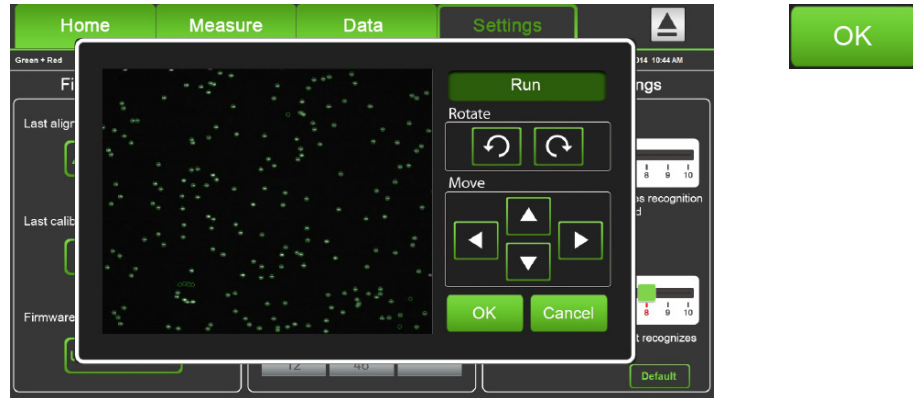
Run


Operation

Settings

Align cameras

6. Press the **OK button** to confirm the correct alignment of the cameras.
Press the **Cancel button** to cancel the alignment.



-  You can also manually adjust the cameras by positioning the green circles over the corresponding Alignment Beads using the directional keys on this screen, but this is not recommended.

IMPORTANT

When installing or moving Arthur™, it is recommended to perform auto-alignment.

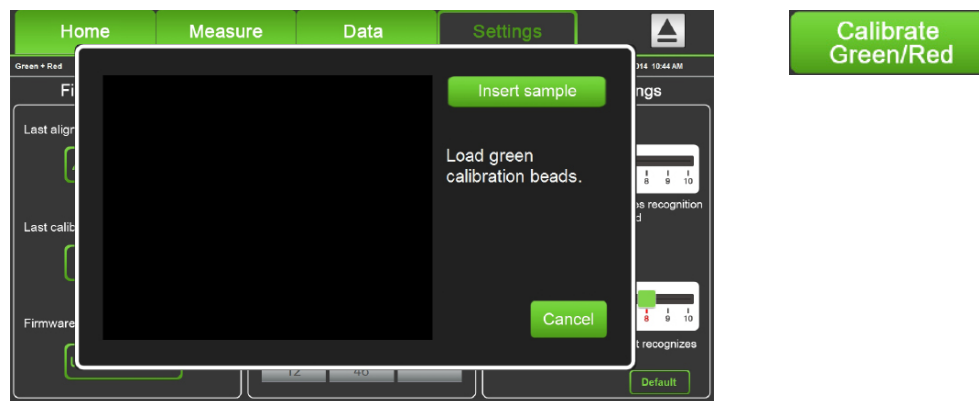
Operation

Settings

Calibrate

Calibrating the green and red fluorescent channels of the Arthur™ is to set the dynamic range of the instrument. The calibration procedure is most effective when performed after alignment sequence.

1. Press the **Calibrate Green/Red button** on the Setting menu. The Calibration Dialog will appear.

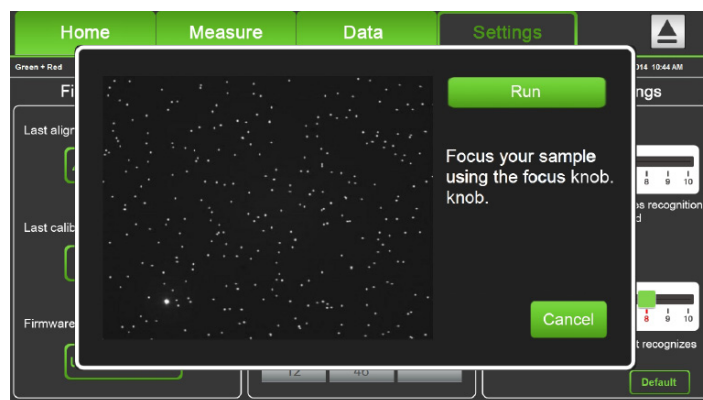


2. Load 25 μL of **Arthur™ Green Calibration Beads** on the Arthur™ Cell analysis slide. Make sure that the beads are mixed thoroughly before pipetting.

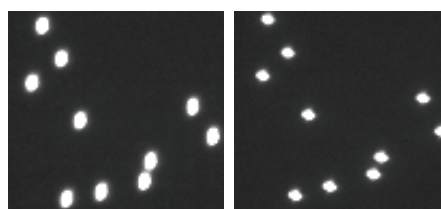
3. Insert the slide with calibration beads into the slide port of instrument and press the **Insert sample button**.

Insert sample

4. Adjust the focus using the **Focus knob**.



When correctly focused, the Calibration Beads will appear round rather than oblong.



Correct Focus

Incorrect Focus

Operation

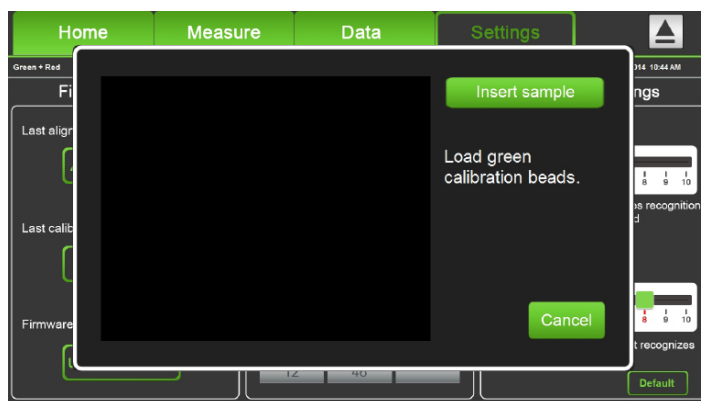
Settings

Calibrate

5. Press the **Run button** to start the auto calibration of the green channel.

A green rectangular button with the word "Run" in white text.

6. When the green channel calibration is complete, the cell analysis slide will be ejected automatically and the red channel calibration dialog will appear.



7. Load 25 μL of **Arthur™ Red Calibration Beads** on the Arthur™ Cell analysis slide (page 20). Make sure that the beads are mixed thoroughly before pipetting.

8. Insert the slide with calibration beads into the slide port for instrument and press the **Insert sample button**.

A green rectangular button with the text "Insert sample" in white.

9. Adjust the focus using the **Focus knob**.

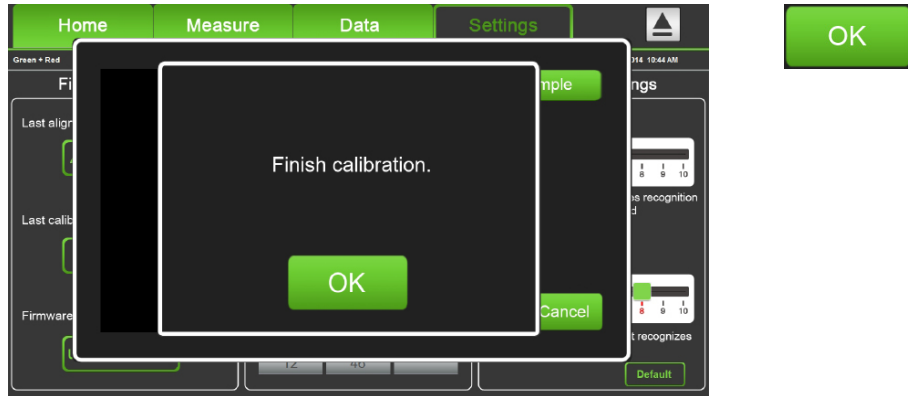
10. Press the **Run button** to start the auto calibration of the red channel.

A green rectangular button with the word "Run" in white text.

Operation

Settings Calibrate

11. Press the **OK button** to return to the Settings menu. Arthur™ does not require recalibration each time the instrument is turned on.



IMPORTANT

- Insert the slide with calibration beads just at the time of use, to prevent drying of solution in slide.
- Allow the beads to settle in the slide before pressing run. There should be no movement of beads on the image.
- The entire calibration can take up to 20 minutes to complete.

Operation

Settings

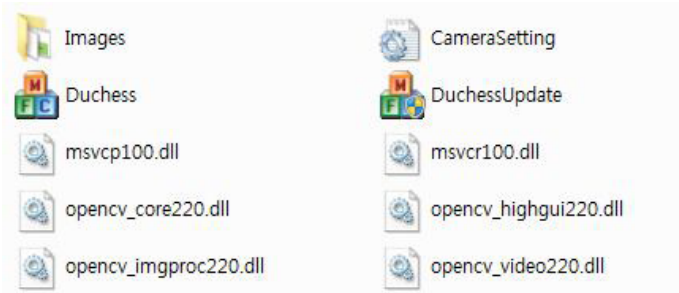
Update firmware

1. Periodically, Nanoentek adds functionality and other improvements to Arthur™ user interface. We recommend keeping your Arthur™ update with the latest firmware using the **Update buttons**.

If you have any questions about the software updates, contact sales@nanoentek.com.

2. Visit our website at www.nanoentek.com to download update software which will be supplied as a .zip file to your desktop.

3. Unzip the Arthur Update.zip file and save the software in a USB drive.

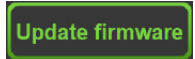


⚠ IMPORTANT

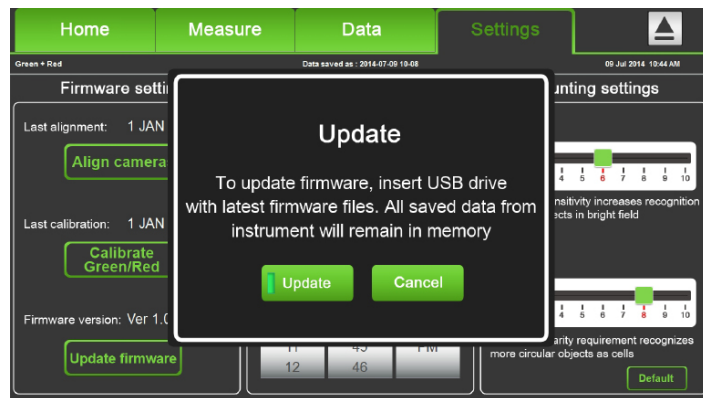
The files must reside individually on the USB drive. Do not transfer as a folder or put the files in a folder.

4. Connect the Arthur™ USB drive to main body of the Arthur™.

5. Check if the version of software and firmware are the latest one. Press the **Update firmware button**. The update process takes a few seconds.



6. The Update dialog will appear. Press the **Update button** to start updating.



7. After updating, press the **OK button** to restart the Arthur™ automatically.



Operation

Recommend actions

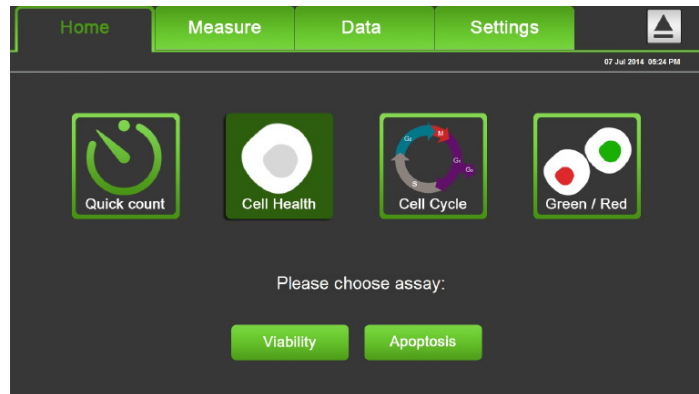
To obtain the best results, follow these recommendations:

- Wear gloves during sample handling.
- Do not touch the optical surfaces of the Arthur™ Cell analysis slides. Hold the slides by the edges.
- Use the Arthur™ at room temperature only (5 – 40 °C).
- The Arthur™ contains delicate optics. Place the instrument on a flat, dry surface that is free from excessive vibration. Do not spill liquids on the surface of the instrument or introduce liquids into its interior.
- The Arthur™ can accurately count cells 5 µm to 60 µm in diameter.
- The recommended sample concentration range for the Arthur™ is 1×10^5 to 1×10^7 cells/mL; however, the sample concentration does not need to be exact to perform an assay.
- For accurate viability count results, ensure the counting area is covered with cell suspension and count cells immediately after staining per the assay protocol.
- Re-calibrate the Arthur™ after updating the firmware or when using assay reagents not formulated for the instrument (page 13).
- The internal working memory of the Arthur™ is 145 Gigabytes, sufficient for storing comprehensive data from 500 sample runs. However, we recommend that you save your data to the USB drive after completing each experiment. Using the USB drive, you may then transfer the data to your PC as described in “Export Data” (page 34).
- After using Arthur™ Cell analysis slides, appropriately dispose of them as biohazardous waste. **Do not reuse the Arthur™ Cell analysis slides.**
- Turn off the Arthur™ at the end of the day.

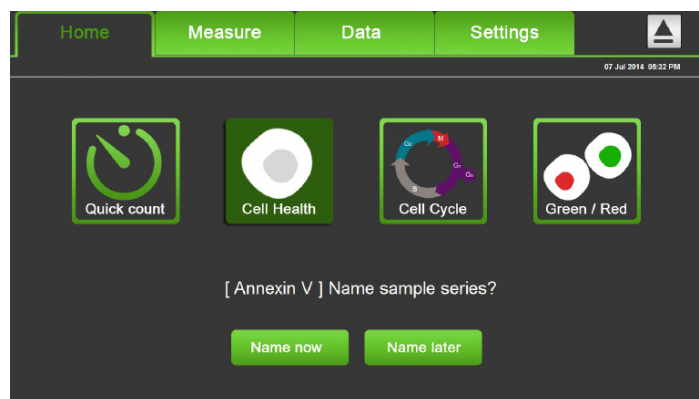
Operation

Selecting assay

1. To select a Arthur™ Assay, press the appropriate assay button (Quick count, Cell Health, Cell Cycle, or Green/Red) on the Home screen. For example, press the **Cell Health button** for the viability and apoptosis assay options.



2. Next, Apoptosis assay is selected from the options, giving you the option to name the sample now or later.



Operation

Naming the sample

1. Press the **Name now button** to name the sample before performing the assay. The alpha-numeric keyboard appears.



2. Type the name of the sample series using up to 40 alpha-numeric characters, and then press the **Save button**. Each sample run in the series will be appended with a number to reflect the order in which it was run.

(Press the **Close button** to return to the previous screen without naming the sample.)

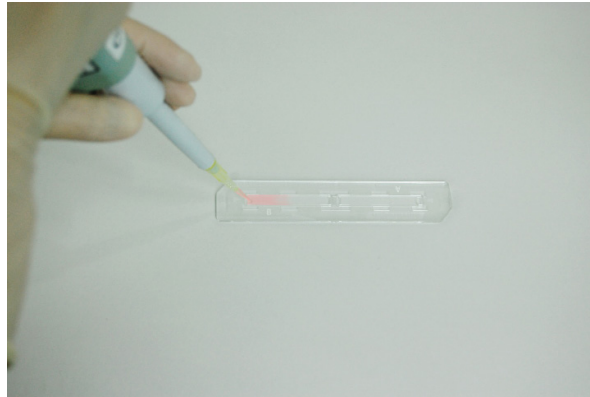
- ☞ If pressing the **Name later button**, the name for each sample series by date and time will be automatically assigned. Go to the **Data screen** to rename, if necessary (page 32).

Operation

Loading sample

1. Load 25 μL of your sample (per slide chamber) on the Arthur™ Cell analysis slide using pipette as described below.

 Load the sample gently to spread it evenly in the cell analysis slide.



IMPORTANT

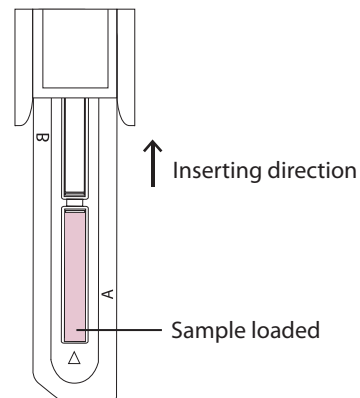
Follow the guidelines below to load your samples on the Arthur™ Cell analysis slide.

- Do not touch the optical surfaces of the Arthur™ Cell analysis slides. Hold the slides by the edges.
- Use 25 μL of sample volume per slide chamber. Do not overfill or underfill the slide chambers.
- Pipette the sample at an angle of approximately 80° into the half moon-shaped sample loading area. The sample is loaded into the chamber through capillary action.
- Take care to avoid forming bubbles in the sample.
- The Arthur™ counts the cells in the chamber opposite the inserting direction. For example, to count the sample in Chamber A, you need to insert the Arthur™ Cell analysis slide into the instrument with the Chamber B-side first until it stops. For inserting the Arthur™ Cell analysis slide into the instrument.
- The Arthur™ Cell analysis slides are specifically designed for use with the Arthur™ exclusively. Use of other slides result in inaccurate cell counts and can damage the Arthur™.

Operation

Loading sample

2. The Arthur™ counts the cells in the chamber opposite inserting direction.




IMPORTANT

To count the sample in Chamber A, insert the Arthur™ Cell analysis slide into the slide port of the instrument with the Chamber B-side first until it stops.

3. Press the **Press to insert new sample button**, the slide will automatically be pulled into the instrument.

Press to insert new sample

 If you are performing a **background measurement**, the button for inserting the sample will read **Press to insert unstained control** (page 23).

Operation

Focusing

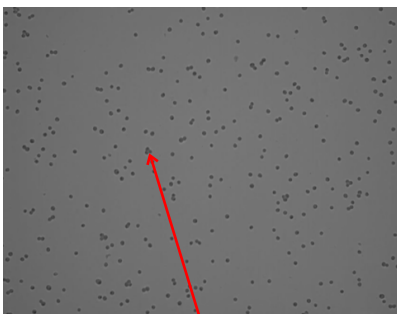
1. Adjust the focus using the **Focus knob** on the right side of the instrument.



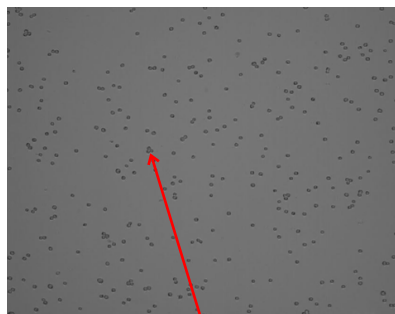
2. Press the **Zoom button** and select either 4× or 16× magnification enhancement to review the image.

- Correctly focused images have uniformly dark-colored cells surrounded by bright halos (see example on the left, below).
- Cells may be undercounted when the transition between the background and the edges of the cells are fuzzy and the cells have undefined boundaries (see example in the middle, below).
- Cells may be overcounted when they have bright centers and dark perimeters (see example on the right, below).

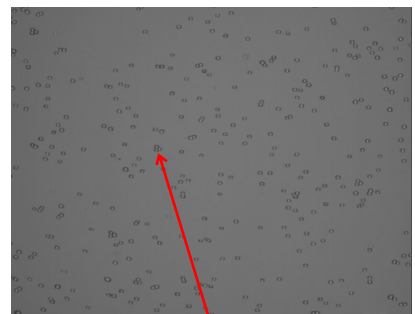
[Image is correctly focused]



[Incorrect –undercounted cells]



[Incorrect –overcounted cells]

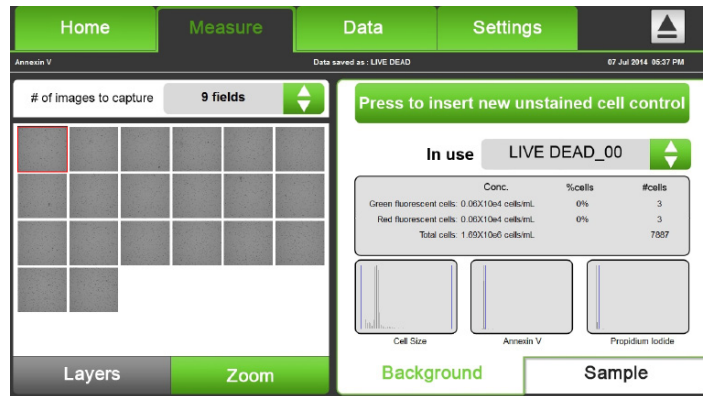


* Cell type : Hep3B

Operation

Measuring background (optional)

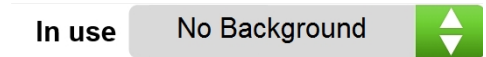
1. Press the **Background** tab to see screen opens.



Background

The Background feature is available for Arthur™ Viability, Apoptosis, Green + Red, and Cell Cycle assays except for the Quick count assay, which does not use fluorescent reagents.

“No Background” will be displayed on the dropdown menu, if there are the saved background measurements for the assay on the instrument. The fluorescence threshold, which you can change manually after the assay, will be set up when choosing not to run a background control.



The latest background will be displayed on the dropdown menu, if there are the saved background measurements on the instrument.



2. Select the **File name** from the **drop-down menu** to use a previous background measurement. If you want to change a previously obtained background measurement, select the other file name from the drop-down menu.

3. To perform a new background measurement, load the slide on the unstained cell control, insert the slide into the instrument, and press the **Press to insert new unstained cell control button**.

Press to insert new unstained cell control

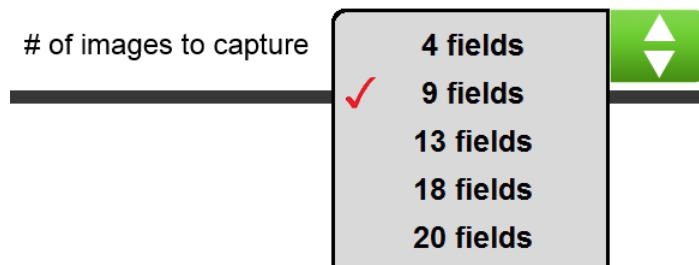
4. Press the **Press to run unstained cell control button** after Arthur™ cell analysis slide is completely pulled into the instrument.

Press to run unstained cell control

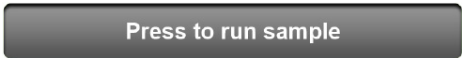
Operation

Running sample

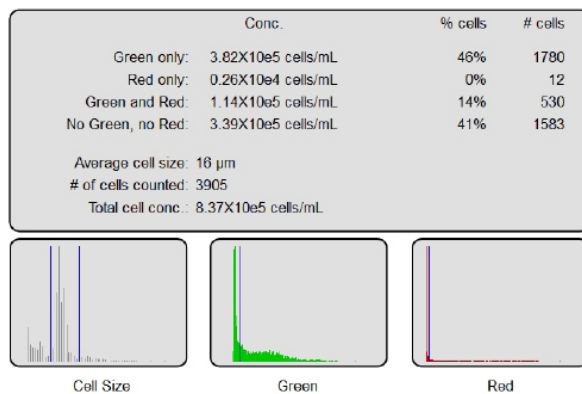
1. Select the number of images from the drop-down menu to specify the number of fields of view to capture.



2. Press the **Press to run sample button** to capture the selected number of images.



3. After capturing the specified number of fields of view, the Arthur™ cell analysis slide will be ejected automatically. The analysis result data including average cell size, the counted number of cells, total cell concentration, assay-specific data, other specific data and histogram plots will be displayed in the data window located in the sample tab.

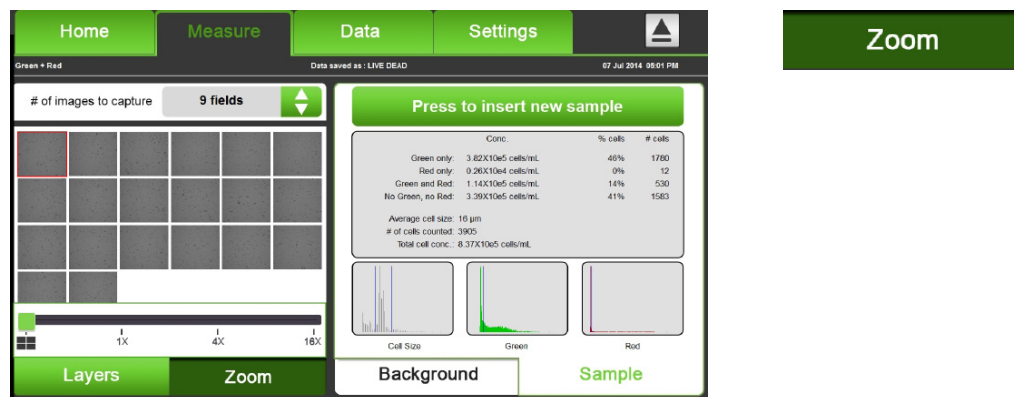


4. If necessary to run the next sample, insert the new slide, and repeat the procedure.

Operation

Running sample

1. Press the thumbnail of the image displayed in the **Zoom tab** to select a captured field of view for review.



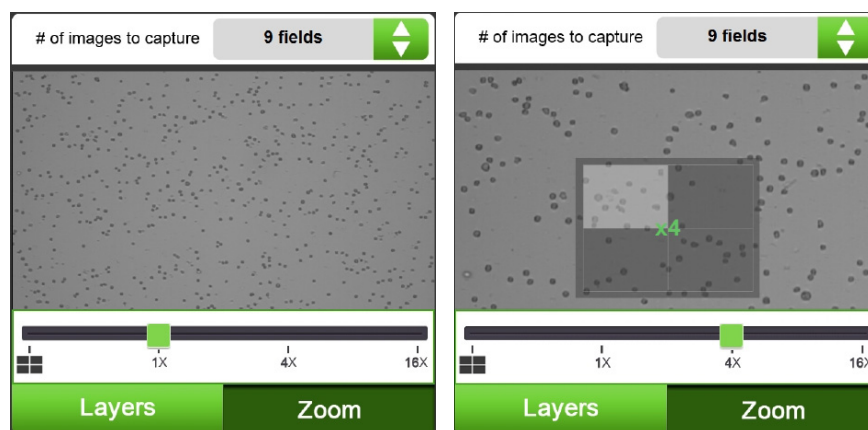
2. Move the **Green square** in the slider bar to zoom in and out the image.




3. Press the **image** to display the navigation tool for reviewing a different section of an image viewed at 4x or 16x magnification.

4. Select the **appropriate area** on navigation tool to display the desired section of the image.

5. Press the **image** outside the navigation tool to hide the tool and review the image.

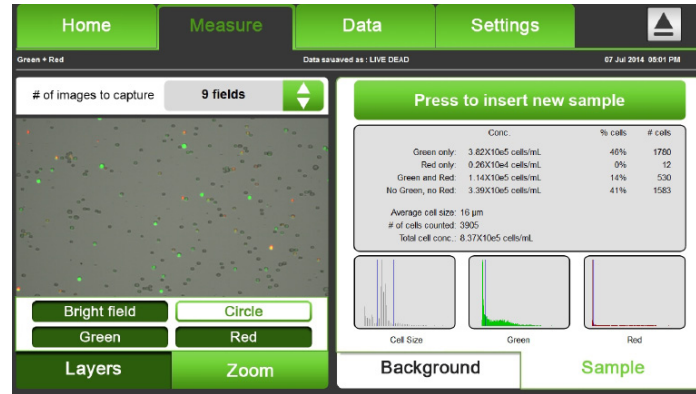


 The navigation tool is only available for reviewing the images at 4x and 16x magnification.

Operation

Running sample

1. Press the **thumbnail** of the image and the **Layers tab** to review images captured through the bright field, the green fluorescence, and the red fluorescence.

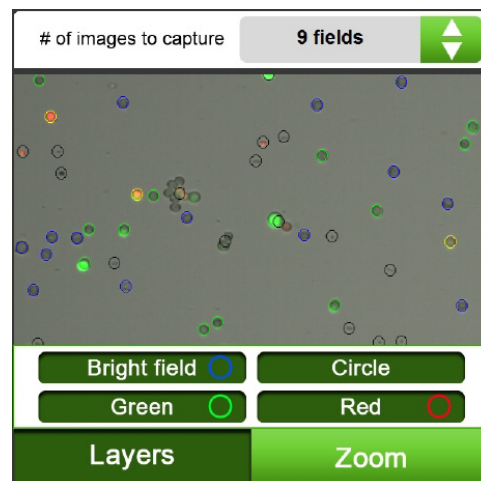


The number of layers that are available for viewing and the labels for those layers depend on the Arthur™ Assay performed. In the example above, the buttons for the fluorescent channels are labeled Green and Red, because the Arthur™ Green + Red Assay is selected. However, if the Arthur™ Apoptosis Assay was selected, these same buttons would be labeled Annexin V (for the green channel) and PI (for the red channel).

2. Press the **Bright field/Green/Red buttons** as necessary. When multiple layers are turned on, they appear overlaid on the image.

3. Press the **Circle button** to identify the cells counted through a particular channel.

Arthur™ circles the cells that were analyzed as follows:



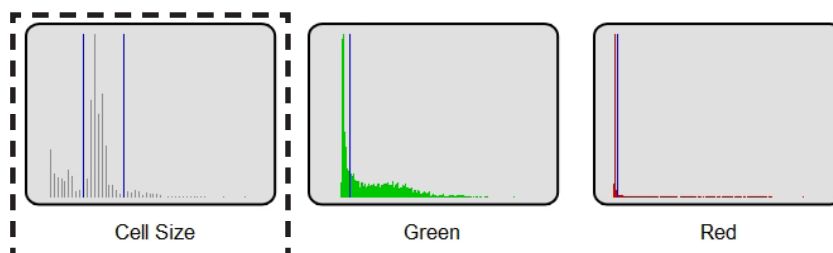
- **Blue:** cells counted in bright field channel
- **Green:** cells counted in green fluorescence channel
- **Red:** cells counted in red fluorescence channel
- **Yellow:** cells counted in both green and red channels
- **Black:** cells excluded from the counting results

Operation

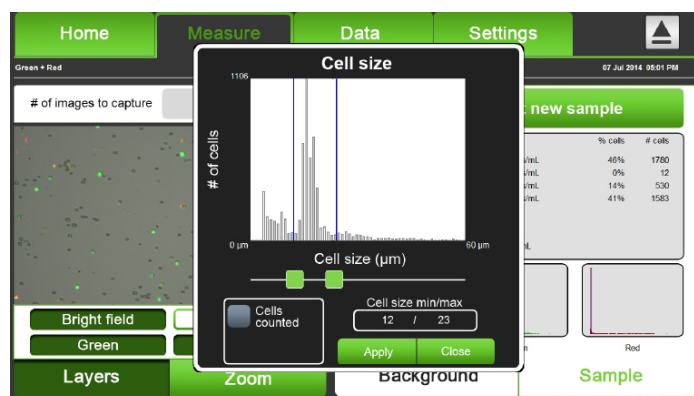
Running sample

The procedure for setting gates and thresholds is identical for all Arthur™ Assays, but the buttons on the touch-screen are labeled according to the specific assay selected. For example, the histogram thumbnails that are labeled Cell size, Green, and Red for the Arthur™ Green + Red Assay (see image below) are labeled Cell size, Annexin V, and PI for the Arthur™ Apoptosis Assay. The thin blue lines on the histograms represent the set thresholds.

1. Press the **cell size thumbnail** to set the gating parameters for cell size.



2. The “Cell size vs. # of cells” histogram will appear. Move the two green square buttons on the slider bar to set the minimum cell size and maximum cell size.



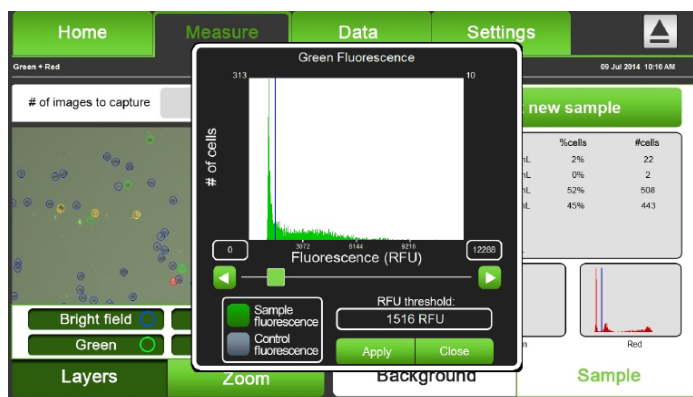
3. Press the **Apply button** to confirm and return to the previous screen.

Apply

Operation

Running sample

4. Press the **Green histogram thumbnail** to set the threshold for the Green fluorescence.



5. Press the **Sample fluorescence button** or the **Control fluorescence button** on the bottom left.

6. Press on the **minimum** or **maximum RFU value** (relative fluorescence unit) to set the x-axis scale and type in a new value using the popup (alpha-numeric) key pad.

7. Move the **arrow button** on the slider bar to set the threshold. Press the **RFU threshold button** and type in the threshold value using the (alpha-numeric) popup key pad.

8. Press the **Apply button** to confirm. Or press the **Close button** to return to the previous screen without setting.

Apply

9. Press the **Red histogram thumbnail** to set the threshold for Red fluorescence.

IMPORTANT

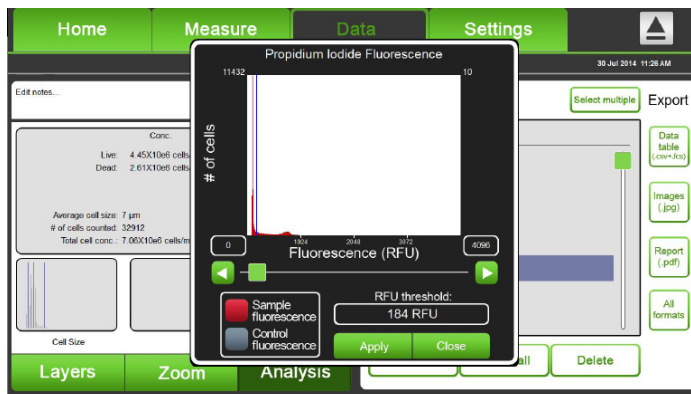
- When using the Arthur™ Cell Cycle Assay, the Propidium Iodide (PI) histogram will have four individual thresholds, which are used for partitioning the cell population into the stages of the cell cycle. Each threshold can be set as described above and the color of each partition will correspond to the appropriate data set in the data table.
- Biological molecules found within cells fluoresce upon excitation and result in background fluorescence. Because the Arthur™ is a highly sensitive instrument, it detects this background fluorescence and displays it as a peak closest to the 0 RFU value. To eliminate the background fluorescence from your calculations, adjust the threshold to exclude this peak.

Operation

Analysis result

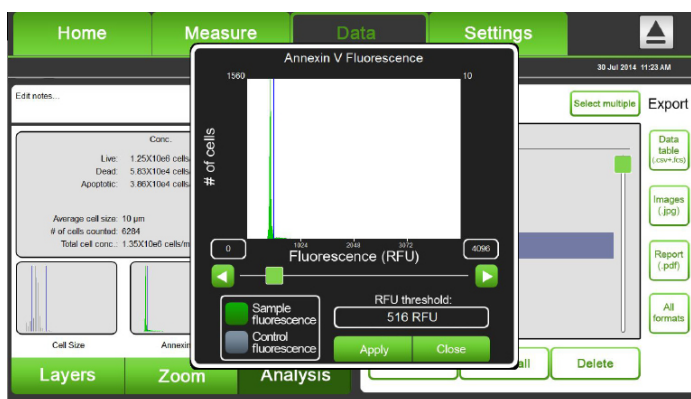
Viability

After the image capture was finished, analysis results will show up as below.



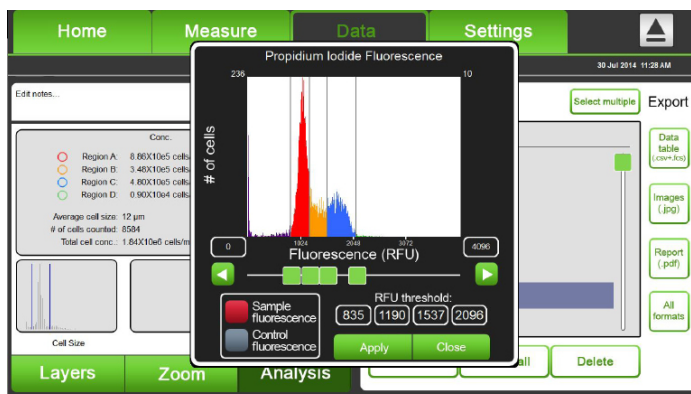
Analysis result

Apoptosis

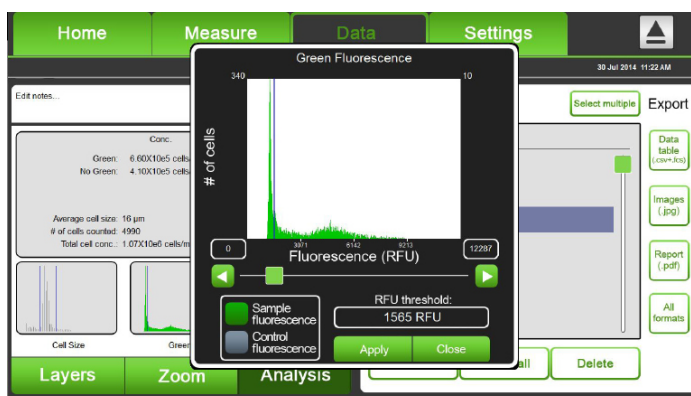


Operation

Analysis result Cell cycling



Analysis result Green Fluorescence

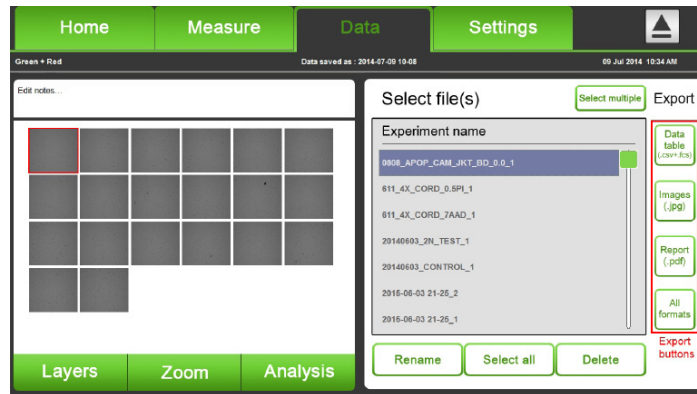


Operation

Analyzing data

Select data file

1. Press the **Data menu** to see the stored data files in a list on the right side of the screen.



2. Move up and down the **Green square button** on the scrollbar to see all data files.

3. Select the data file to review by touching the corresponding line on the file list.

☞ **Select Multiple button** to select more than one file at a time. The Select Multiple button will be disabled when pressing it again.

☞ **Select All button** to select all files in the list.

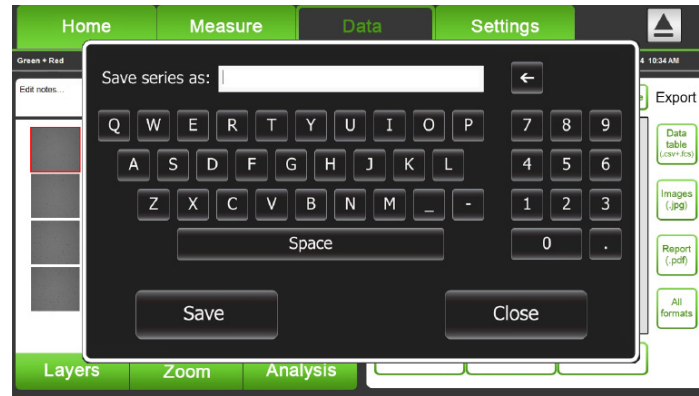
☞ The internal working memory of the Arthur™ is 145 Gigabytes, sufficient for storing comprehensive data from 500 sample runs. However, we recommend that you save your data to the USB drive after completing each experiment. Using the USB drive, you may then transfer the data to your PC as described in “Export Data” (page 34).

Operation

Analyzing data

Rename

1. Select the **Data file** to rename.
2. Press the **Rename button** to rename the selected files. The alpha-numeric keyboard will appear.



Rename

3. Enter the file name using the keyboard, and then press the **Save button**. Press the **Close button** to return to the previous screen without renaming.

Save

Analyzing data

Delete

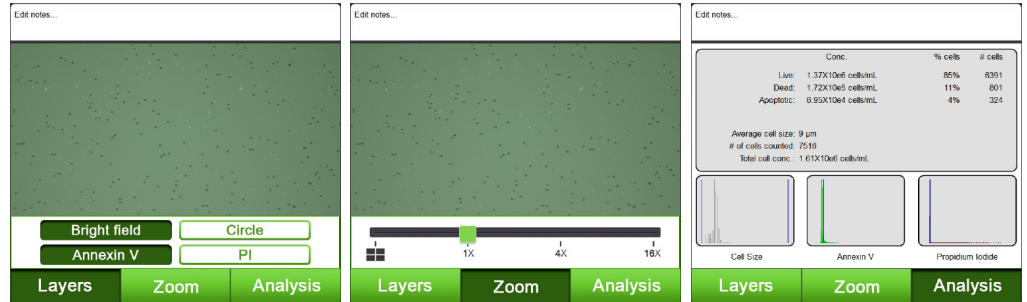
1. Select the **Data file(s)** to be deleted.
 - ☞ **Select Multiple button** to select more than one file at a time. The Select Multiple button will be disabled when pressing it again.
 - ☞ **Select All button** to select all files in the list.
2. Press the **Delete button** to delete the selected file(s).

Delete

Operation

Analyzing data Review

1. Select the **File name** from the Data menu to review the saved data.
2. Press Layers, Zoom, or Analysis tabs to display the corresponding screens.



Analyzing data Annotate

1. Select the **File name** to annotate, and press the **Notes box** above the data window. The alpha-numeric keyboard will appear.

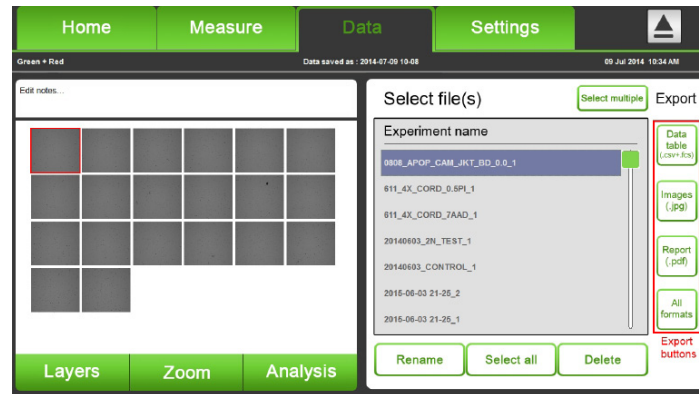


2. Enter your **comments** using the keyboard, and then press the **Save button**. Your comments in the Notes box is be attached to the file and shown on all Data tabs (i.e., Layers, Zoom, and Analysis). Press the **Close button** to return to the previous screen without your comment.



Operation

Analyzing data Export data



- **Data table** contains comprehensive information about the count with size and fluorescence intensity of each individual particle/cell in the sample and provided in .csv file and .fcs file format.
- **Images** exports a single image in each channel collected for each field of view. Images are exported as .jpg files.
- **Report** contains only the aggregate results and calculations from the run such as the total cell count and concentration, counts and concentrations of fluorescent cells and their relative abundance in the sample, thumbnails of the bright field image of each field of view captured, as well as the relevant histograms and instrument settings in a .pdf file (page 36).

Operation

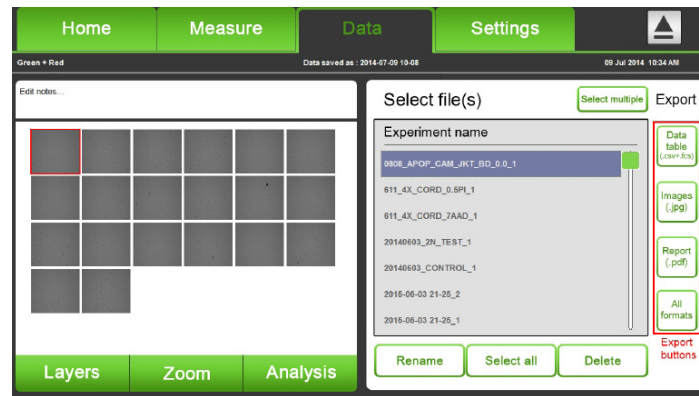
Analyzing data

Export data

1. Connect the Arthur™ USB drive (or any other USB drive) into the Arthur™.
2. Select the **Data file** to export. Press the **Select all** to highlight all files.

Select all

3. Press the **Data table (.csv and .fcs) button, Image (.jpg) button, or Report (.pdf) button** to export the data in the designated formats. Press the **All formats button** to export data in all these formats.

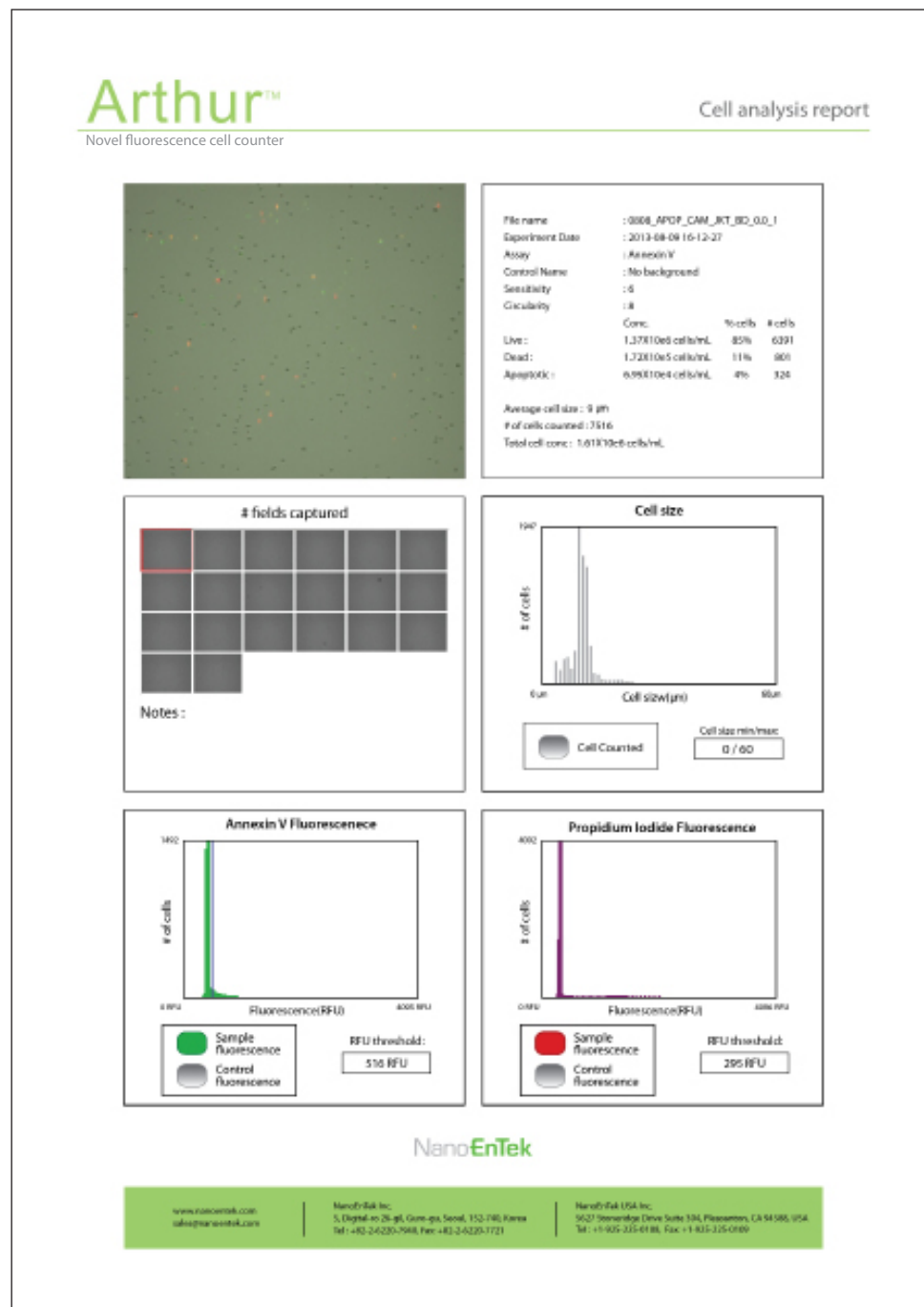


4. Transfer the files on the USB drive to your PC. You may open the exported files using the appropriate programs.

Operation

Analyzing data Cell analysis report

The image below shows an example of a data analysis report exported as a .pdf.



Cleaning & Maintenance

Clean the surface of the Arthur™ with a damp cloth. To clean the LCD screen, turn off Arthur, disconnect the power cable, and clean the LCD screen with a soft cloth lightly moistened with LCD cleansing detergent. Cleaning the screen with excessive force can damage the LCD screen. Wipe the screen dry immediately. Do not reuse the cell counting slides.

Arthur™ does not need regular maintenance. To troubleshoot problems with Arthur™, contact Technical Support (page 44).

IMPORTANT

Never disassemble or service Arthur™ by yourself.

Unauthorized repairs may damage Arthur™ or alter its functionality, which will void your warranty. Contact sales@nanoentek.com or your local Arthur™ distributor to arrange for service.

Always wipe surfaces with ethanol-soaked paper towels.

Do not directly spray ethanol anywhere on Arthur™.

Avoid exposing Arthur™ to UV light

UV light may degrade components, including plastic. Damage from UV exposure is not covered under the manufacturer's warranty.

Warranty

Nanoentek warrants the Arthur will be free from defects in material and workmanship for a period of one (1) year from date of purchase.

If any defects occur in Arthur during this warranty period, NanoEnTek will repair or replace the defective parts at its discretion without charge.

The following defects, however, are specifically excluded:

1. Defects caused by improper operation.
2. Repair or modification done by anyone other than Nanoentek or an authorized agent.
3. Damage caused by substituting alternative parts.
4. Use of fittings or spare parts supplied by anyone other than Nanoentek.
5. Damage caused by accident or misuse.
6. Damage caused by disaster.
7. Corrosion caused by improper solvent or sample.

For your protection, Arthur™ units being returned must be insured against possible damage or loss. Nanoentek cannot be responsible for damage incurred during shipment of a defective instrument. It is recommend that you save the original packing material in which the instrument was shipped. This warranty is limited to the replacement of defective products.

For any inquiry or request for repair service, contact sales@nanoentek.com or your local distributor.

Safety precautions

Review and follow the safety instructions below :

- If water or other material enters the instrument, adaptor, or power inlet, disconnect the power cord and contact a service person. For operating environment, refer to Product Specifications (page 42).
- Do not touch the main plug or power cord with wet hands.
- Always ensure that the power supply input voltage matches the voltage available at your location.
- This instrument is air-cooled and its surfaces may become hot during operation. During installing, leave a space of more than 10 cm (4 inches) around the instrument and do not place any objects between the instrument and the walls.
- Do not install the instrument on a slant or a place prone to vibrations, which induces the risk of instrument malfunction or damage of the instrument.
- Never insert any objects into the air vents of the instrument as this could result in electrical shock, personal injury, and equipment damage.
- Plug the power cord firmly into the wall outlet and AC adapter.
- To avoid potential shock hazard, make sure that the power cord is properly grounded.
- Be sure to position the equipment such that it is easy to disconnect.
- Turn off the instrument before unplugging the power cord and/or moving the instrument.
- If the instrument is dropped or broken, disconnect the power cord and contact a service person. Disassembly of case will void warranty.
- Use only authorized accessories (adaptor, power cord, and USB drive).

Warning

Class A equipment is intended for use in an industrial environment. In the documentation for the user, a statement shall be included drawing attention to the fact that there may be potential difficulties in ensuring electromagnetic compatibility in other environments, due to conducted as well as radiated disturbances.

Consignes de securite

Examinez et suivez les consignes de securite ci-dessous :





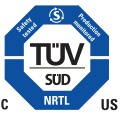
- N'installez pas l'instrument dans un endroit humide comme une serre ou un incubateur pour eviter un risque de choc electrique. Si de l'eau ou tout autre materiau penetre dans l'instrument, l'adaptateur, ou l'entrees d'alimentation, debranchez le cordon d'alimentation et contactez un technicien de service. Pour l'environnement d'exploitation, reportez-vous aux specifications du produit.
- Ne touchez pas la fiche ou le cordon d'alimentation principale avec les mains mouillees.
- Assurez-vous toujours que la tension d'entree d'alimentation correspond a la tension disponible dans votre endroit.
- Cet instrument est refroidi a l'air de sorte que ses surfaces peuvent devenir chaudes pendant le fonctionnement.
- Lors de l'installation de l'instrument, laissez un espace de plus de 10 cm (4 pouces) autour de cet instrument et ne placez aucun objet entre l'appareil et le mur.
- N'installez pas l'instrument sur une pente ou un endroit soumis a des vibrations, ce qui induit le risque de dysfonctionnement ou d'endommagement de l'instrument.
- N'inserez jamais aucun objet dans les orifices d'aeration de l'instrument, car cela pourrait entrainer un choc electrique, des blessures chez les utilisateurs et des dommages d'equipement.
- Branchez le cordon d'alimentation fermement dans la prise murale et l'adaptateur secteur aussi.
- Pour eviter un risque potentiel de commotion electrique, assurez-vous que le cordon d'alimentation est correctement mis a la terre.
- Assurez-vous de positionner l'instrument de telle sorte qu'il soit facile de debrancher l'instrument.
- Eteignez l'instrument avant de debrancher le cordon d'alimentation et / ou de deplacer l'instrument.
- Si l'instrument est casse ou qu'il soit tombe, debranchez le cordon d'alimentation et contactez un technicien de service. Ne demontez pas l'instrument et la garantie sera annulee en cas de demontage.
- Utilisez uniquement les accessoires autorises (l'adaptateur, le cordon d'alimentation, et le lecteur USB).

Warning

Le produit de classe A est conçu pour l'utilisation dans un environnement industriel. Dans la documentation de l'utilisateur, la déclaration doit être incluse pour attirer l'attention sur le fait qu'il peut y avoir des difficultés potentielles pour assurer la compatibilité électromagnétique dans d'autres environnements, en raison des perturbations rayonnées et conduites par l'électricité.

Safety precautions

Review and follow the safety instruction below:

Symbol	Meaning
	<p>Caution & Warning</p>
	<p>Protective earth (Ground)</p>
	<p>This instrument and consumables conforms to the EC Declaration of Conformity.</p>
<p>FCC Compliance</p>	<p>This equipment has been tested and found to comply with the limits for a Class A digital device, pursuant to Part 15 of the FCC Rules. These limits are designed to provide reasonable protection against harmful interference when the equipment is operated in a commercial environment. This equipment generates, uses, and can radiate radio frequency energy and, if not installed and used in accordance with the instruction manual, may cause harmful interference to radio communications. Operation of this equipment in a residential area is likely to cause harmful interference in which case the user will be required to correct the interference at his own expense.</p>
	<p>Disposal of your old appliance¹. When this crossed-out wheeled bin symbol is attached to a product it means the product is covered by the European Directive 2012/19/EU². All electrical and electronic products should be disposed of separately from the municipal waste stream via designated collection facilities appointed by the government or the local authorities³. The correct disposal of your old appliance will help prevent potential negative consequences for the environment and human health⁴. For more detailed information about disposal of your old appliance, please contact your city office, waste disposal service or visit our web-site, www.nanoentek.com.</p>
	<p>This product conforms to UL 61010-1, CAN/CSA C22.2 No.61010-1 "Safety Requirements for Electrical Equipment for Measurement, Control, and Laboratory Use, Part I: General Requirements." Instruments bearing the TUV symbol are certified by TUV Product Services to be in conformance with the applicable safety standard for the US and Canada.</p>

Product specifications

Environmental conditions

Operating power	100 – 240 VAC, 2.5 A, 120 W
Frequency	50 / 60 Hz
Installation site	Indoor use only
Operating temperature	5 - 40 °C
Maximum Relative Humidity	20 - 95 %

Instrument

Counting time	10 sec. ~ 2 min.
Cell measurement range	1×10^5 - 1×10^7 cells/mL
Cell size range	5 - 60 μ m
Optics	3 channels (bright field, green fluorescence, red fluorescence)
Excitation	Green channel LED: 458 ± 20 nm Red channel LED: 530 ± 20 nm
Filters	Green channel: 466/40 EX, 495 LP Di, 525/50 EM Red channel: 543/22 EX, 580 LP Di, 585 LP EM
Camera	1.3 Mega pixels, 4 \times objective, 4 \times or 16 \times digital zoom
USB drive	4 GB
Dimension	290 mm (W) \times 440 mm (D) \times 290 mm (H)
Weight	8.7 kg

Cell analysis slide

Material	Polylactic acid (PLA)
Dimension	110 mm (W) \times 24 mm (D) \times 1.9 mm (H)
Chamber (sample) volume	25 μ L

Ordering information

Cat No.	Description
AT1000	Arthur™ Novel fluorescence cell counter
AC0050	Arthur™ Cell analysis slide (50 slides)
AC0500	Arthur™ Cell analysis slide (500 slides)
AB0100	Arthur™ Calibration beads (100 µL)

Technical support

Visit the our Website at www.nanoentek.com for :



- Technical resources, including manuals, FAQs, etc.
- Technical support contact information
- Additional product information and special offers.

For more information or technical assistance, please call or email.

NanoEnTek Inc. (HQ)

5, Digital-ro 26-gil, Guro-gu, Seoul, 152-740, Korea

Tel :+82-2-6220-7940

Fax:+82-2-6220-7721

NanoEnTek USA Inc.

5627 Stoneridge Drive Suite 304, Pleasanton, CA 94588, USA

Tel :+1-925-225-0108, +1-888-988-0108(Toll free)

Fax:+1-925-225-0109

Email

sales@nanoentek.com

Website

www.nanoentek.com

All the materials in this user guide are protected by Korean and international copyright laws. They cannot be reproduced, translated, published or distributed without the permission of the copyright owner.

Arthur™ Instruction manual

Website : www.nanoentek.com

E-mail : sales@nanoentek.com



Manufactured by : NanoEnTek Inc.

12F, 5, Digital-ro 26-gil, Guro-gu, Seoul, 152-740, Korea

Website : www.nanoentek.com

E-mail : sales@nanoentek.com

The information in this manual is described as accurately as possible. Firmware and software changes and updates may change without prior consent or notification.

Copyright ©2014 by NanoEnTek Inc. All rights reserved. Published in Korea.

Documentation : NESMU-ATT-001E

Revision history : V.0.0 Date : SEP 2014

V.0.5 Date : JUN 2015

Arthur™

Novel fluorescence cell counter

NanoEnTek

NanoEnTek Inc. (HQ)

5, Digital-ro 26-gil, Guro-gu, Seoul, 152-740, Korea

Tel : +82-2-6220-7940

Fax: +82-2-6220-7721

NanoEnTek USA Inc.

5627 Stoneridge Drive Suite 304, Pleasanton, CA 94588, USA

Tel : +1-925-225-0108, +1-888-988-0108(Toll free)

Fax: +1-925-225-0109

Email

sales@nanoentek.com

Website

www.nanoentek.com